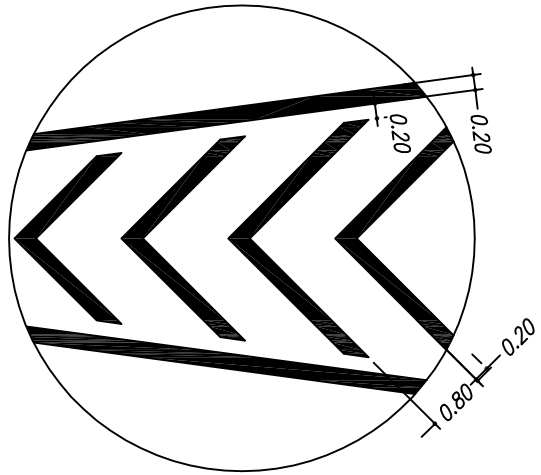


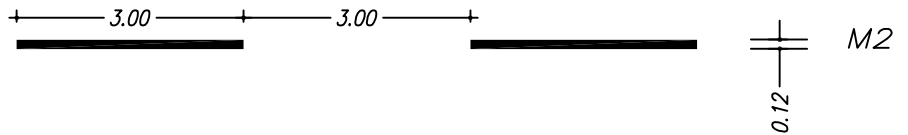
Raias -----



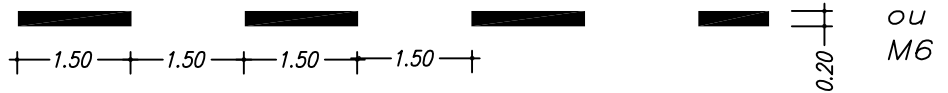
Linha branca contínua
(LBC) - eixo



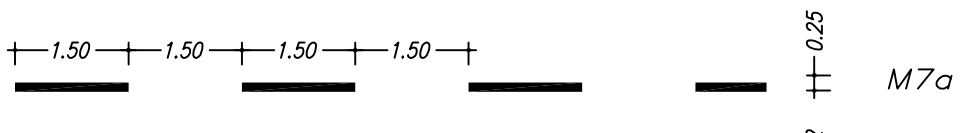
Linha branca tracejada
(LBT) - filas



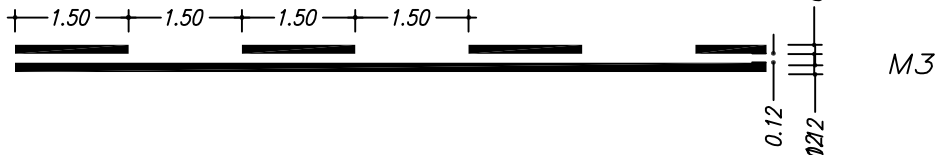
Linha branca tracejada
de abrandamento ou
aceleração (LBT a)-
-fila e eixo de via



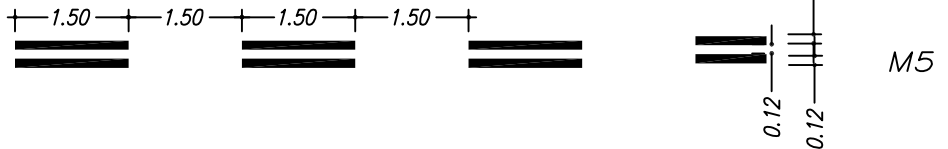
Linha branca tracejada de
corredor de transporte
público BUS (LBT b)



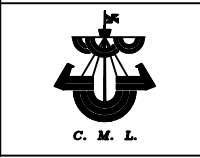
Linha branca contínua +
linha branca tracejada
(LBM)



Linha branca tracejada
(LBR)



*Marcas Rodoviárias
(adoptadas em LISBOA)
Marcas longitudinais*



DATA 97/08/20	APROVADO em . . / . . / . . POR		DESENHO N.º
	Ver em : C:\R13\NORMAS\Marcas_Rodoviaras\MRodov_1_2_4		294/97
Substitui o des. n.	O C. da DIVISÃO Eng. António Abreu	O DIRECTOR	
Substituído pelo des. n.	O TÉCNICO	O DESENHADOR Silvino Rect.01/05/07 Helena	O TOPÓGRAFO
			ESCALAS 1:100